

ABOUT CVMG

The Cardiovascular Medical Group of Southern California (CVMG) has pioneered the introduction of one of the world's first integrated 64-Slice CT cameras in a leading academic cardiology practice. CVMG and its 17 cardiologists, each with subspecialty training, including advanced imaging, have performed thousands of Cardiac CT studies.

CVMG, with the cooperation of General Electric, Cedars-Sinai Medical Center, and UCLA Medical Center, is now offering the exceptional training opportunity. Participants of this 6-9 day course will work with the LightSpeed VCT 64-Slice CT Scanner and are assigned to a dedicated GE Advantage workstation, now with Version 4.3.

The course will be held in CVMG's Beverly Hills office, which is located in the heart of Beverly Hills with discounted rooms one block from CVMG in a luxurious setting with some of the best restaurants in the Los Angeles area.



PROUD AFFILIATES



GE Healthcare



UCLA Medical Center



Cedars-Sinai
Medical Center



CVMG



REPUTATION

- Internationally published leaders in the field and in professional societies.
- Attended by international students from leading academic and private practices.
- Longest combined experience of instructors of any course with the highest ratings (Entire ratings history to 2005 on request).
- *Thousands of cardiologists have been trained in this course.*

UPCOMING COURSES

Level I Classes

- More classes pending.

Level II to III Classes

- September 16-21, 2007 (Full/Closed)
- September 30– October 5, 2007
- October 21-26, 2007
- November 11-16, 2007
- December 2-7, 2007
- January 13-19, 2008
- March 2-8, 2008

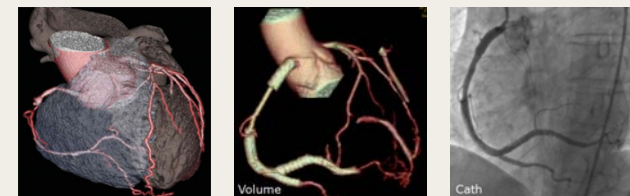
For more details and additional dates, feel free to call, email or visit www.cvmg.com

414 N. Camden Drive, Suite 625
Beverly Hills, California 90210

Tel: 310 278 3400
Email: ctcourse@cvmg.com
Web: www.cvmg.com

CT Master Series

Cardiac Imaging With Computed Tomography



Advanced Certification

LEVELS I-III



SCCT Endorsed Training Course



Tel: 310 278 3400
www.cvmg.com

COURSE OVERVIEW

These courses are targeted to individuals who have been introduced to Cardiac Ct through didactic material, introductory courses and initial experience in acquisition and interpretation of CT coronary angiograms.

The **Level II Course** takes place at the CVMG Advanced Imaging Center and consists of the following:

- **Intense interaction with instructors and co-students. Work with well-trained angiographers, advanced imaging academic leaders and radiologists.**
- Master the language and efficiency of clear report generation.
- Program exceeds Level II or III SCCT requirements for case load and live cases.
- Thousands of cases (CAD, congenital heart disease, peripherals and carotids) in library.
- SCCT submission suitable log will be provided.
- **5 Level III instructors, constant attendance by course directors and mentors.**
- Manage, interview, and monitor the acquisition of patients and interpret CT with your mentor.
- Learn specific software techniques to solve problems.
- Master approaches common to all vendor workstations.
- **6 days, starts Sunday (total 8 days).**
- Combined with Level I (10 days).
- Combined with Level III (16 days).
- **One student per workstation.**
- Individual access to Network Electronic Medical Records (EMR) and all cardiac imaging in multi-media classroom.
- Work at your own pace with individualized instruction.
- Receive support material on CD, which includes slides, videos of lectures and complete library of reference material.

PRICING

\$3600 Level I
\$7500 Level II
\$7500 Level III

FACULTY BACKGROUND

Matthew J. Budoff, M.D.



Dr. Budoff graduated from George Washington University School of Medicine and completed his internship, residency and cardiology fellowship at Harbor-UCLA Medical Center. He has published over 100 articles and authored textbook chapters on many aspects of cardiac computed tomography and its impact on coronary artery disease. He lectures both nationally and internationally on Cardiac CT and is an NIH-funded researcher on sub-clinical Atherosclerosis. Dr. Budoff chaired the recently published ACC/AHA Competency Guidelines for Cardiac CT and MR, and has edited the most popular textbook on Cardiac CT.

Ronald P. Karlsberg, M.D.



Dr. Karlsberg received his medical degree from the University of California, San Francisco. He completed his residency at the University of Colorado and his cardiology fellowship at Washington University in St. Louis, Missouri. Dr. Karlsberg is Clinical Professor of Medicine at the David Geffen School of Medicine and is the founder of the Cardiovascular Research Institute of Southern California (CVRI). The CVRI has participated in hundreds of clinical trials and is embarking on new studies clarifying the role of CT angiography in the office setting. Dr. Karlsberg has published over 200 peer-reviewed papers, book chapters, as well as lectured locally, nationally and internationally.

ADDITIONAL FACULTY

Daniel S. Berman, M.D.



Dr. Berman is Chief of Cardiac Imaging and Nuclear Cardiology at S. Mark Taper Foundation Imaging Center. Dr. Berman, Professor of Medicine at the David Geffen School of Medicine at the University of California, Los Angeles (UCLA), is a leader in cardiac imaging research. He is one of the principal developers in nuclear cardiology techniques and applications. Past and current research endeavors include new applications

for Cardiac CT, MRI, PET and SPECT, as well as development of automated computer-based image assessment methods. Lecturing extensively around the world, he also serves on the committees of numerous professional organizations and editorial boards. Dr. Berman has written more than 500 original manuscripts, chapters and books. He has served as an Associate Editor for the Journal of the American College of Cardiology and is a fellow for both the American College of Cardiology and the American Heart Association's Council on Clinical Cardiology.

John D. Friedman, M.D.



Dr. Friedman received his medical degree from the University of Southern California and completed his internship, residency and fellowships in internal medicine, cardiology and nuclear medicine at Cedars-Sinai Medical Center. Dr. Friedman is the Associate Director of Cardiac Imaging at Cedars-Sinai Medical Center, S. Mark Taper Foundation Imaging Center, and Professor of Clinical Medicine at UCLA School of Medicine. Dr. Friedman is board certified in internal medicine with a subspecialty in cardiovascular disease and nuclear medicine. Dr. Friedman's research focus is on the clinical application and quantitative analysis of nuclear cardiology, cardiac MRI, cardiac CT and new imaging agents. Dr. Friedman has written and co-written numerous papers for peer-reviewed publications and has presented lectures, locally and nationally, focusing on myocardial SPECT imaging, MRI and Cardiac CT.

Louise Thomson, MB ChB



Louise Thomson received her medical degree from the University of Otago, New Zealand in 1991. She trained in internal medicine, cardiology (Auckland, NZ) and nuclear medicine in Sydney, Australia, before moving to the United States in 2002. She studied cardiac MR under the supervision of Drs. Raymond Kim and Robert Judd at the Duke Cardiovascular Magnetic Resonance Center prior to moving to Los Angeles.

For more information, feel free to contact us:

Tel: 310 278 3400

Email: ctcourse@cvmg.com

Web: www.cvmg.com